

Guest Services



ON SITE RECEPTION

We are a team of friendly service professionals ready to meet your requirements – 7 days a week



PANTRY SHOPPING

Let us save time for you. We can stock your pantry ready for your arrival.



BREAKFAST OPTIONS

Quest's nutritious breakfast options are a great way to start the day.



VALET DRY CLEANING

Quest takes care of your dry cleaning while you get on with business.



RESTAURANT CHARGE BACK

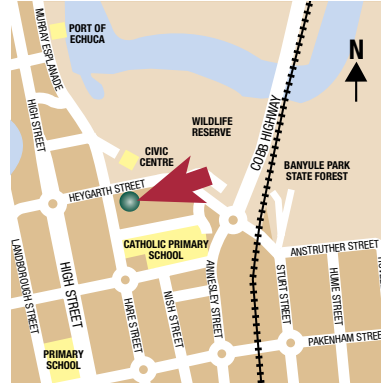
Simplify your expenses by booking and paying for selected local restaurants on your Quest account.



BUSINESS ADMINISTRATION SERVICES

Our capable reception team can assist you with your general administrative needs.

Location



TRANSPORT

Melbourne Airport (Tullamarine)	212 km
Echuca Coach Terminal	300 mtrs
Echuca Railway Station	1.1 km

ATTRACTIONS

Echuca CBD	50 mtrs
Civic Centre	20 mtrs
Law Courts	20 mtrs
Port of Echuca	550 mtrs
Wharf Shed Museum	550 mtrs
Historical Society Museum	650 mtrs
OZ Maze	350 mtrs



**25-29 Heygarth Street,
ECHUCA, VIC 3564**

Tel: 03 5481 3900 Fax: 03 5481 3999
questechuca@questapartments.com.au
www.questechuca.com.au

The Quest Serviced Apartment Group – over 110 properties throughout Australia, New Zealand and Fiji.
 For more information about Quest visit our website www.questapartments.com.au or phone Central Reservations Australia 1800 334 033 or New Zealand 0800 944 400.

VIC
Regional



Quest Echuca Serviced Apartments



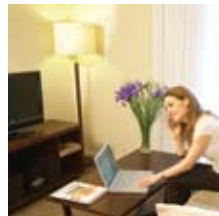
www.questechuca.com.au

The Property

Located in the heart of town, everything Echuca has to offer is at the doorstep of this superb modern property. With its stylish furnishings and 4.5-star rating, Quest Echuca is set to make your stay a comfortable one.

Guests enjoy a variety of accommodation options, from studios to one, two and three bedroom serviced apartments. Guest services are available for your convenience, including pantry shopping, restaurant charge back, breakfast options and valet dry cleaning.

The conference room is perfect for a wide range of meetings, presentations or even a product launch, with the ability to cater for up to 50 delegates. Business administration services are on hand. Guests can enjoy the BBQ facilities and solar heated outdoor swimming pool. Convenient on site parking is available while both the Echuca Railway Station and coach terminal are located nearby.



Quest Echuca



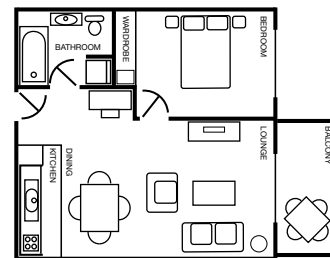
Apartment Features & Facilities

Quest Echuca offers a range of studio, one, two and three bedroom serviced apartments to suit both the short term and extended stay traveller.

For complete comfort, these spacious apartments feature fully equipped kitchen (studios feature a kitchenette) and laundry facilities, along with separate living and dining areas. Facilities include individually controlled reverse cycle air conditioning, LCD televisions with Austar connection and DVD/stereos (DVD only in studios). Most apartments also feature their own private balcony. Guests can keep in touch with broadband Internet access and direct dial telephones with voicemail.

Allow Quest Echuca to be your accommodation solution for business or leisure.

TYPICAL ONE BEDROOM APARTMENT LAYOUT



Echuca Area Guide



Two-and-a-half hours drive north of Melbourne and located on the Victoria/New South Wales border where the Cobb, Murray Valley and Northern highways meet, historic Echuca is a vibrant town that is easy to access and a delight to visit.

Home to the annual Southern 80 Ski Race and many other festivals and events, visitors are attracted to the town by its warm climate and many major attractions, such as the historical Old Port of Echuca and Australia's largest collection of operating paddle steamers. Spend a day visiting one of the many wineries, or relax and enjoy cuisine prepared with fresh produce from the local region. Numerous sporting venues such as golf and lawn bowls are within easy reach, allowing plenty of opportunity to sight-see and relax.

For the corporate traveller, the Echuca CBD, Civic Centre, Law Courts and Regional Health Hospital are all located nearby.

